



# CAMELON PARISH CHURCH

---

# PARISH PROFILE



## Contents:

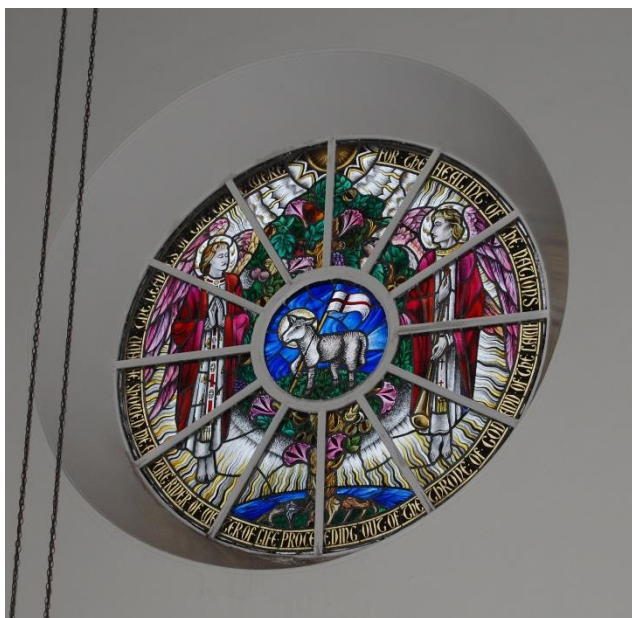
1.	Introduction.....	3
2.	History of the Charge.....	5
3.	Community Profile.....	8
4.	Worship Life.....	11
5.	Pastoral Care.....	12
6.	Ecumenical Context.....	12
7.	Christian Education.....	13
8.	World Church.....	15
9.	Stewardship & Finance.....	15
10.	Staffing.....	16
11.	Church, Manse & Halls.....	16
12.	Web Links.....	17

## INTRODUCTION

### The Call

This congregation seeks to call an innovative, vibrant minister to lead us in pursuing a community focused ministry that resonates with the Word of God and the Joy of the Risen Christ, changing and improving lives in meaningful and practical ways.

The current Camelon Parish Church came into existence following the union between Camelon Irving and Camelon: St John's Parish Churches on December 30th 2003. The minister of Camelon: St John's, Reverend Stuart Sharp, became minister of the new Camelon Parish Church until his translation to Killearn Kirk on November 15th 2018.



On 14th May 2019, the Kirk Session agreed to depart from the historic and current doctrine and practice of the Church in respect of same-sex relationships and its application to the Ministers and Deacons of the Church.

**Our Mission Statement: 'Serving Christ and our Parish'.**

We seek to build the Kingdom of God in this parish through faithful preaching of God's word, prayer and directed action. By faith and example, proclaiming the Gospel to our community in ways which are relevant to them and their needs by:

- † Being Christ focused in everything that we do
- † Sharing and reflecting upon God's Word together to understand His will for us
- † Serving Christ through practical community outreach
- † Encouraging Kingdom growth through our willingness to try new things
- † Putting people at ease, making them feel welcome and valued in the presence of God
- † Sharing fellowship and worship in a way that is stimulating to those of all ages
- † Encouraging each other through prayerful support and tangible help
- † Working ecumenically to share the redemptive love of Christ



## HISTORY OF THE CHARGE

### Past

The history of the Kirk in Camelon is fragmented, as it is in so many towns throughout Scotland. The original Camelon Parish was first constituted by the Church of Scotland in 1842. Since then the history of the Church in Camelon became increasingly complex resulting in the parish of Camelon being split into three distinct areas, then in 1973, following the congregation of Camelon Trinity Church being dissolved, it was split between Camelon Irving and Camelon St John's Churches. These two churches continued independently until their union in 2003.

### Present

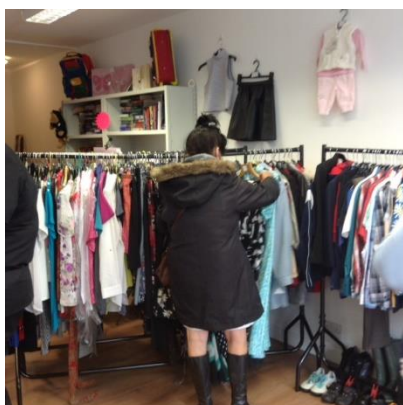
With a small, but enthusiastic Kirk Session of 13, we function under the unitary constitution. Operationally, we have three teams - Compliance, Church & Community and Ministry within these we draw on the skills and aptitudes of the congregation to 'man' the teams and events in the community.

With a congregational roll of 172, the attendance at worship varies from between 40 - 70 with greater attendances at special services. At present, we have a predominantly aged congregation, we do however strive to encourage participants of all ages. There have been a good number of visitors to Sunday worship who have chosen to return on a regular basis and at the time of writing (August 2019) we have just welcomed 10 new members to the congregation.

### Our Missional accomplishments and Aims



We seek to look outwardly, from within the Church towards the community. This is not to the detriment of those within the church family, but rather a commitment to share our family values with those we reach out to.



A major achievement towards our missional goal has been our successful charity shop in the Main Street of Camelon. Opportunities to reach the community abound within this project, from providing reasonably priced clothing (or indeed free where necessary) or homeware, to providing a listening ear to those who simply come into the shop for a blether, with bounteous opportunities for 'recycling' our profits back into the community through needy causes.



This, alongside our close relationship with Falkirk Foodbank as founding members gives a firm grounding to our commitment to provide a living, active, practical Christian basis to our outreach into this community.

Our aims and dreams continue with our hope for a new community-based church to be built for to accommodate modern needs to support families and people of all ages.

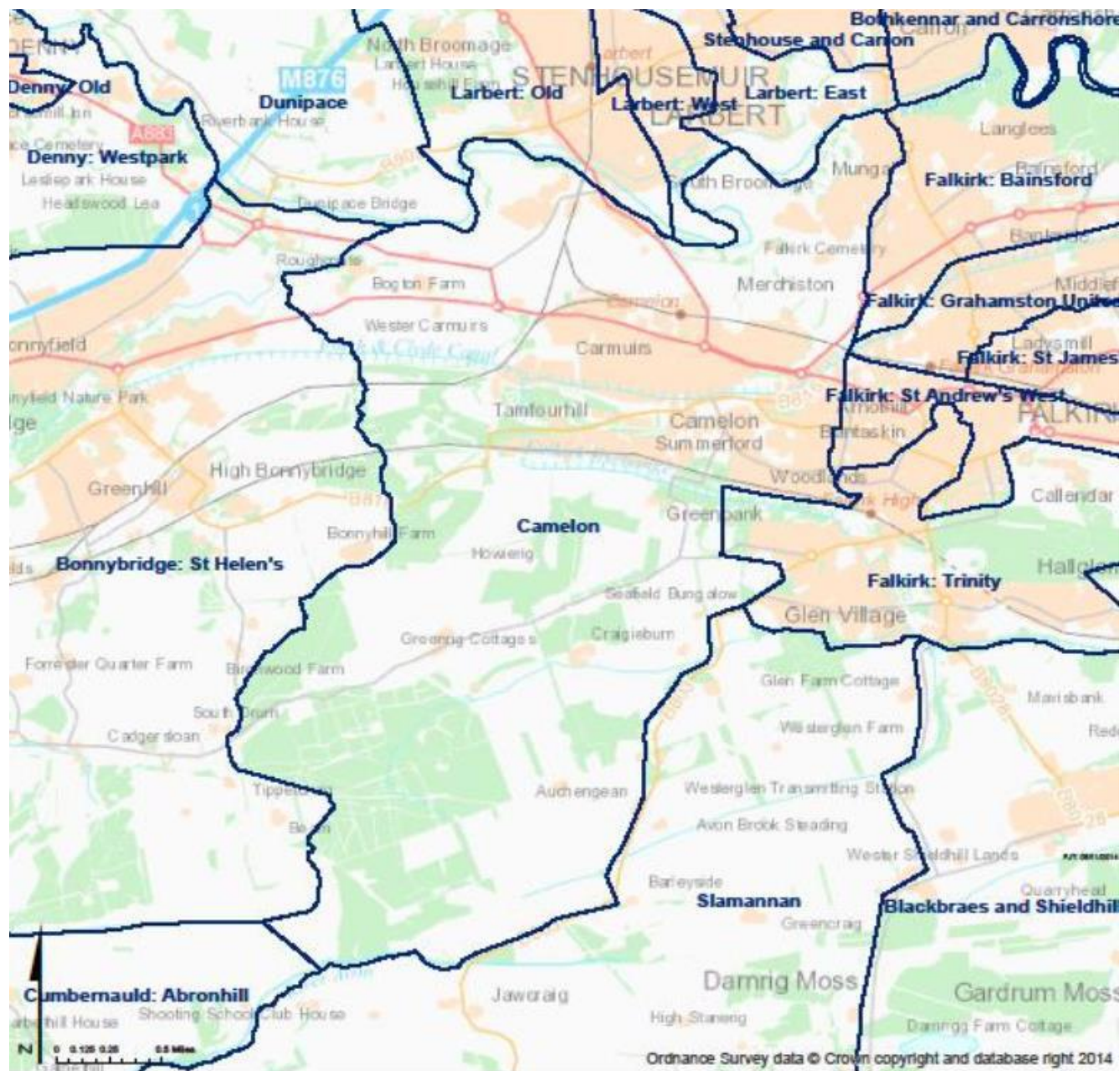
In summary, the aims of the Kirk Session and congregation are:

- To reach out to the community in a range of meaningful ways directly and through the groups we come into contact with
- To provide facilities for charities and other community groups to meet in and function at a nominal rate
- To expand and increase the range of support services that can be accessed within the community
- To expand the range of ministries supported or operated by the church to enrich the lives of those in our community
- To support our Ministry team, through both prayer and action, where possible reducing the administrative burden, in order to maximize their impact in our community



## COMMUNITY PROFILE

Camelon is the western gateway to the town of Falkirk. Camelon parish has a population of 12,981. The area covered by the parish is shown below.





The Church of Scotland Parish Statistics publication for Camelon Parish states that if Camelon were a village of 100 people:

- 7 would be in primary school; 5 would be in high school
- 28 would be aged between 25 and 44
- 17 would be aged 65 or over
- 74 would be of working age (16-65), including:
  - 25 who have no qualifications;
  - 31 who work full time;
  - 12 who are retired
- 6 would describe their health as bad or very bad
- 9 would be providing unpaid care

It further states that, if Camelon were a village of 100 households:

- 35 households would consist of one person, 14 of whom are aged 65 and over
- 27 would have dependent children (aged under 16, or under 18 in full-time education)
- 41 would be in rented accommodation
- 68 would have access to at least one car or van
- 5 would speak a language other than English in the home

11% of people in Camelon Parish said that their day to day activities were limited a lot and 12% said that their day to day activities were limited a little by their health.

The nearby town of Falkirk offers excellent shopping and transport facilities, with easy access to the Central belt's motorway network and two main-line railway stations, plus smaller stations in Camelon itself and nearby Larbert. Glasgow, Edinburgh and the Trossachs are all within 30 minutes travel time.

For families, the Falkirk area is served by a number of modern Primary and Secondary schools (the manse being in the catchment area for Langlees Primary and Falkirk High schools - see links below), plus a brand new Forth Valley College campus.

[HTTPS://WWW.FALKIRK.GOV.UK/PLACES/SCHOOLS-NURSERIES/PRIMARY-SCHOOLS/LANGLEES-PRIMARY-SCHOOL.ASPX](https://www.falkirk.gov.uk/places/schools-nurseries/primary-schools/langlees-primary-school.aspx)

[HTTPS://WWW.FALKIRK.GOV.UK/PLACES/SCHOOLS-NURSERIES/SECONDARY-SCHOOLS/FALKIRK-HIGH-SCHOOL.ASPX](https://www.falkirk.gov.uk/places/schools-nurseries/secondary-schools/falkirk-high-school.aspx)

Sports and leisure facilities in the Parish include the Mariners sports centre and swimming pool, ten-pin bowling, indoor & outdoor bowling, and other local clubs including football, rugby and golf.

The local area has benefited from various urban regeneration projects in recent years, including the popular Helix Park with its giant Kelpies installation, and the famous Falkirk Wheel, a rotating boat lift connecting the Forth & Clyde canal with the nearby Union canal. The Wheel and its canal links are all located within the parish.

Other local attractions illustrate the area's history. For over 6 centuries Callendar House has played host to many great historical figures: Mary, Queen of Scots, Cromwell, Bonnie Prince Charlie and, more recently, the cast of the Outlander TV series! In 1298, William Wallace fought (and lost) the Battle of Falkirk, and echoing an even more distant past, the Roman remains of the Antonine Wall run through the heart of the parish, influencing many local street names.

As a consequence of the social and economic challenges facing the local population, significant focus has been placed on regeneration and community engagement by local and national Government and also 3<sup>rd</sup> sector organisations. Our Place Camelon was awarded £1m by the National Lottery's Community Fund in 2018 to support 8 projects, including the promotion of local arts, sport, conservation, the rehabilitation of those leaving the criminal justice system and improvements to the physical environment in the area.

## WORSHIP LIFE

Vibrant, diverse and contemporary would best describe the worship life of Camelon Parish Church (CPC). We place a high emphasis on servanthood and consider discipleship as priority.

In our Sunday worship services at 11am we attempt to strike a fine balance between old traditional styles of worship and something new and fresh that appeals to a more modern age. The idea is to be as inclusive and accommodative as possible ensuring that people from all generations experience the presence of the LORD and Saviour Jesus Christ.



What would this entail?

Musically, we vary between using a digital box for hymns (Missional Praise & CH4) and guitar lead song. Our preaching style is radically informal and the minister uses a music stand as lectern guaranteeing close proximity with the congregants in the pews. The Word of God is central to preaching at CPC. Before, after, or during the service there's a coffee/tea station where members are encouraged to help themselves. Informal conversations around a cuppa often leads to fellowship and deeper intimacy in relationships.



Our children especially enjoy the services as it's becoming increasingly interactive; creating space for organic and natural participation where kids are often encouraged to join through reading, prayer or drama. The fact that we utilize multimedia resources such as a data projector for videos and images further underscores our desire to communicate the Gospel as creatively and clearly as we possibly can. Our young people are encouraged to be part of the quarterly Holy Communion celebrations.

Our well-equipped and competent ministry team assists with preparing and planning for weekly worship. This includes the following; Bible study to discuss the Scripture, assisting with the PowerPoint, creating an appropriate liturgical setting, welcoming folk at the door, readings during the service, occupying the digital box, serving folk with refreshments and arranging logistics for the church building.

Our worship life extends well into the week with a vast diversity of activities where we include and incorporate the local community. We believe, in actual fact, that it is HERE within the community, that our true calling lies.

### PASTORAL CARE

Pastoral care is an effective way to interact and communicate with the local community. CPC is in the privileged position of serving a relatively big parish with a few residential care facilities and the minister could potentially be involved in these homes, time permitting. Information and news with regards to pastoral issues are usually spread around by word of mouth and ends up with the minister who'll then decide how to approach the scenario. Deciding whether a situation needs urgent attention, such as in the case of a passing and then the planning of a funeral. The congregants and elders frequently support the minister in pastoral care.

### ECUMENICAL CONTEXT

CPC is of the opinion that different spiritualities acquire different styles of worship and therefore support other denominations whenever it is possible.

There is a monthly clergy meeting at the Inchyra Hotel in Grangemouth that's representative of assorted churches varying from conservative evangelistic to liberal independent. There is a strong culture of support and backing amongst Church of Scotland ministers within the Presbytery and although there's currently no official fraternal meeting; church leaders often meet to discuss challenges faced in ministry or to inspire one another with fresh perspectives.

## CHRISTIAN EDUCATION

- **Junior Church-** Children attend the first part of Sunday worship and are then given the opportunity to attend Junior Church after their part of the service. The number of children attending fluctuates each week
- **Home Group-** A safe space for young adults to gather together and support each other exploring their faith and learning more about God's Word
- **Bible Study-** This enthusiastic and lively group meet weekly offering a place to connect with other believers in fellowship in order to further develop their understanding of the bible just as Jesus' own disciples did
- **Monthly Lunch & Fellowship-** An alternative to those unable to attend Sunday morning worship. A short informal service is followed by a simple lunch and fellowship
- **Tuesday Fellowship Group-** Meet every second Tuesday. This group is attended and run by church members, but the majority of those attending are from the wider community. On average 40 people attend
- **Busy Bees Craft Group**
- **Allsorts Mums & Toddlers Group**



- **Girls' Brigade & Boys' Brigade-** These groups are well attended by young people in the parish and are encouraged and supported by the Kirk Session. There are around 50 children attending BB&GB. These groups attend church around 4 times a year.



- **Act 1: Drama/Musical Theatre-** In April 2019 we were excited to set up what is now a burgeoning group for young people within the parish. Many of the families involved are otherwise be 'un-churched'.



## WORLD CHURCH

Awareness of being part of a greater body of Christ in the World will continue to reshape our focus and mission. CPC continuously aspire to reach out to less fortunate and underprivileged communities, not only in Falkirk, but around the world. In the past we've hosted youth mission groups from the United States and we've embarked on an exposure trip to India. With a South African associate minister at CPC we're bound to go visit Africa in the near future as well! We have extended a warm invitation to outreach organizations such as Global Challenge Expeditions to use our premises and facilities as a base for them to do outreach programmes in local schools.

Our leadership team stays up to date with developing stories around the world and we regularly pray for those in other countries who struggle or fight the war against oppression and injustice.

## STEWARDSHIP & FINANCE

The annual accounts for the year to 31<sup>st</sup> December 2018 reported a surplus of £8k (2017: £5k surplus) after making Ministries & Mission payments of £45k.

The congregation's voluntary giving is supplemented by income generated from hall lets, the rental of the Lionthorn Manse (the property having been retained following the 2003 union) and from the Charity shop's undistributed trading surplus.

CPC did not participate in the recent National Stewardship Campaign, as it was anticipated at the time that we were about to commence organised fundraising for the new church building project. We are grateful for the time and talents of our congregation that are expended on the upkeep of existing facilities and we continue to review our overall Stewardship needs in the light of other projects.

A change of Treasurer occurred during 2019, providing an opportunity to review a range of policies and procedures relating to Stewardship and Finance issues.

Links to the Congregation's latest annual accounts can be found on the OSCR website and the latest superintendence report can be accessed via the Falkirk Presbytery website.

## STAFFING

A new Associate Minister recently joined the Ministry team at Camelon Parish Church under the MDS scheme. This is currently the only paid position within the charge, as administrative tasks including those of the Church Officer, are shared amongst the ministry team and Elders, with no honorariums paid.

## CHURCH, MANSE & HALLS

Following the union of Camelon St John's and Irving Church in 2003, Falkirk Presbytery granted the new charge of Camelon Parish Church leave to build a new worship centre. Many obstacles to achieving this objective have been encountered during the intervening years, and final approval for our preferred scheme has yet to be granted by Historic Scotland. However, despite the frustrations, the Kirk Session and Congregation remain convinced that the status quo is neither sustainable, nor desirable for the progressive, community focused church we need to be.

The property assets of both pre-union charges have been retained in order to generate rental income, pending selective disposals when capital is required for the construction of the new church building.

A modern 5-bedroom detached Manse in an attractive housing development close to the current church building, has been maintained to a high standard. A second 5-bedroom Manse in the Lionthorn development to the south of Falkirk is let via a property agency.



The existing worship centre consists of a plain gothic church building dating from 1890 and an adjoining hall complex on two floors, built in 1972.

The site of the other church building in Glasgow Road, Camelon, is the proposed location for our new worship centre. The existing structure on that site was built in 1840 and extended in 1924, but has been unoccupied for a number of years and is now in extremely poor condition, as the substantial sums required to address longstanding defects cannot be justified for a building which will be demolished under our preferred development scheme.



The property portfolio is completed by a second set of halls in Brown Street, some 200m from the Glasgow Road site. Both sets of halls are let regularly to Church and community groups, with bookings managed by a sub-group of Elders.



**WEB-LINKS:**

[HTTP://WWW.CAMELONPARISHCHURCH.ORG.UK/HOME](http://www.camelonparishchurch.org.uk/home)

[HTTPS://WWW.FACEBOOK.COM/PG/CAMELONPARISH/EVENTS/?REF=PAGE\\_INTERNAL](https://www.facebook.com/pg/camelonparish/events/?ref=page_internal)